



# SnapLab SL620A II™

Best ALL-IN-ONE printing system!

- Professional Grade Photo Printing System
- Compact and suitable for any retailer or event.
- Photo printing software that easily creates framed prints, calendars, collages, greeting cards, panorama prints, plus other creative projects.
- Print from Android® or Apple® devices, SD card, USB, and more!
- 3-year Advance Exchange (AE) Warranty on the photo printer!



## Customer Friendly

Customers can easily access their photos via the wireless or wired smartphone connections, memory card slots, or by using the 11.6" HD Touchscreen to log into their favorite social media accounts.

## Easy-to-Use Software

Our intuitive photo printing software prompts the user step-by-step through the workflow and allows retail customers or event attendees to easily create and print photos, collages, calendars, greeting cards, and more!

## Wireless Ready

The Snap Lab is WIFI equipped and ready to transfer images from your smartphone with the click of a QR code. This not only removes the hassle of excess cords, when the SnapLab is connected to the network, it also allows customers to log into social media and cloud storage accounts.



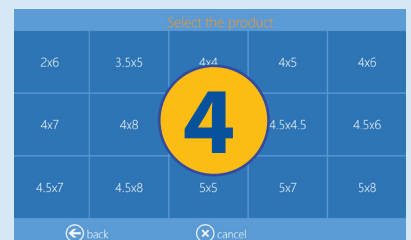
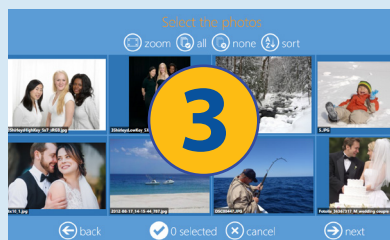
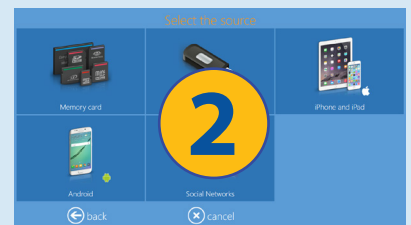
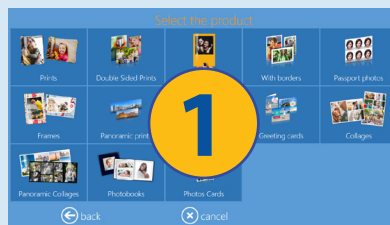
- Touchscreen Operation: Durable 11.6" High-Resolution.
- Smartphone holder
- Cables for Apple® and Android® and Wireless cellphone connection for fast image transfers.
- Media Card Reader: SD, USB-A and USB-C ports.
- DS620A, the best 6" professional photo printer on the market! 3-year Advance Exchange Warranty\* included on the printer.
- The user interface is highly configurable to add or remove options and control the user experience to suit your operating environment.
- Produces FOUR distinct photo finishes without changing media! Glossy • Luster • Matte • Fine Matte
- Ability to connect two DNP printers. Add a DS820A to have the widest variety of photo prints and products available.

**Compact & suitable  
for any retail environment**



## Simple Ordering Process

- 1 **Select the product**
- 2 **Select the source**
- 3 **Select the photos**
- 4 **Select the size & finish**







## GROW YOUR REVENUE WITH OUR VALUE-ADDED PRODUCTS!

In a competitive photography and retail market it's increasingly important to offer more diverse products in order to stand out. Our photo editing software allows just that!

### Panoramic



### Framed Prints



### Greeting



### Cards

### Collages



### Passport Photo



## Connecting Wirelessly

Customers can easily transfer and print images via Wifi from your Android and Apple smartphone.



### Scan QR Codes



### Select & Upload Images



## Unmatched Versatility

For more versatility, connect the DS820A, our 8" printer, to enable your customers to print even bigger photos.



## Photo Retailers

- Easily setup for end user facing operation.
- Reduced equipment size for smaller counter top footprint.
- Perfect for mobile phone users.
- Multiple value-added products.
- Wireless phone printing - app free using QR codes.

## Event Photographers

- Compact, portable and easy-to-use interface.
- High capacity output, without losing photo print quality.
- Easily configured for Retail or Event workflow operations.
- Fast onsite printing with Streamlined workflow.
- Add decorative or custom frame border for event printing.

## Specifications

<b>Kiosk Order System</b>	SL620A II
External Dimensions	10.8" W x 15.7"D x 10.5-16.8"H
Weight	36 lbs. (approx.)
<b>Order Terminal</b>	DT-T6mini II
External Dimensions	11.5" Wide X 11.0" High X 14.3" Depth
Weight	10.3 lbs. (approx.)
Interface	USB 2.0 (4 ports), USB 3.2 (2 ports*) LAN (2 ports)
Power Supply	110-240V AC 50/60Hz, 1.4A-0.6A
Display	11.6" Touchscreen Panel 1366x768
PC Unit	OS: Windows 10 IoT 64 bit CPU: Intel N97 @ 3.6GHz Memory: 8GB DDR5 SO-DIMM HDD: 128 GB
Mobile Connectivity	Apple, Android, wireless image transfer into Snap Lab via simple QR code smartphone interface (iOS & Android)
Media Reader	SD Card slot, USB-A and USB-C ports
Payment (Option)	Print job release is configurable
Printer Expansion	DS620A, DS820A, DS-RX1HS, QW410, DS40, DS80
Software Language	English, Spanish, Portuguese, French, & More
<b>Printer</b>	DS620A
External Dimensions	10.8" W x 14.4"D x 6.7"H
Weight	26lbs. (approx.)
Interface	USB 2.0
Power Supply	110-240V AC 50/60Hz 3.9A-1.6A Max 0.5W Standby
Print Speed	4x6"-9.8 sec., 5x7"-14.1 sec., 6x8"-15.7 sec.
Print Quantity per Roll	4x6"(400 sheets), 5x7"(230 sheets), 6x8"(200 sheets)

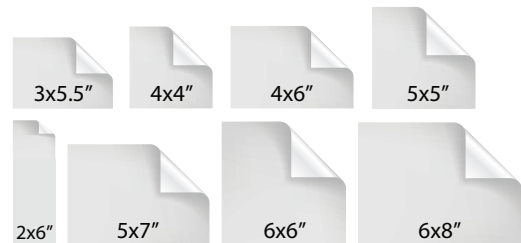
Android is a registered trademark of Google, Inc. Apple is a registered trademark of Apple Inc. Windows is a registered trademark of Microsoft Corporation.



**Think BIG!** The 4x6" isn't your only option. Expand your offerings with multiple size formats by using 6x8" media. Or use the other Luxury DNP media types Pearl or Metallic for stunning printed photos.



## DS620A Print Sizes



## Panoramic Sizes



<https://bit.ly/4kO4o1p>

© 2025 DNP Imagingcomm America Corp. All rights reserved.  
Reproduction in whole or part without written permission is prohibited.  
Specifications subject to change without notice.

SnapLab\_II\_Product\_Sheet\_R6 - rev.2508



/DNPPhotoPrinting



@DNPPhoto



@DNPPhoto

**DNP**  
Photo Imaging